



QRP, INC.

a **PEM**® Company

presents

QCTL

Quick Change Track Lock

*the efficient track fastener handled
without tools!*

Manufactured in Leland, NC USA
www.qrp-inc.com



QRP Inc is the Exclusive Licensee to VTR-Ruether for the QCTL product line.

Track Line Orientation

Parallel Parts



Typ: QRP-1PHF-105
Page 7

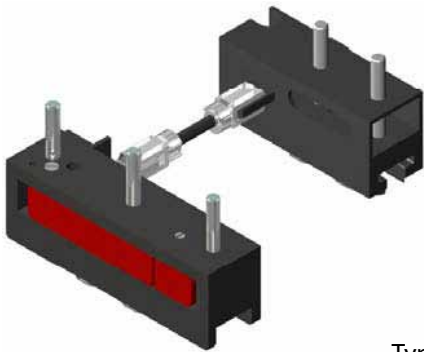


Typ: QRPLH-252
Page 8

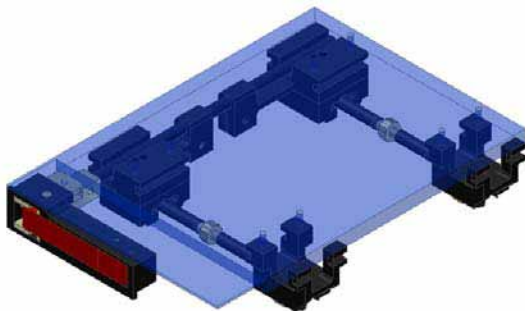
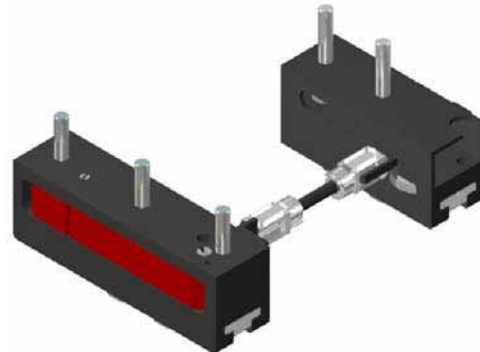


Typ: QRPAL-252
Page 9

Doghouse Systems



Typ: 1PHB-105-501/502
Page 11



Typ: QRP-IN-252
Page 12

General description:

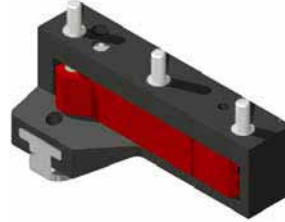
- latch actuating, safety lock
- Recognizable open lever standoff from housing in the unlocked position
- using standard tracks (light, mid and heavy duty)
- no shifting at installation, true 1 step installation
- incorporated anti rattle by minor adjustments
- true plug and play technology

Track Line Orientation

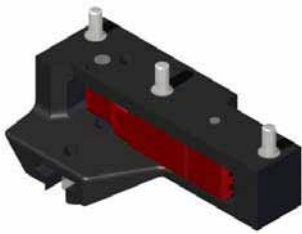
Cross Track Parts



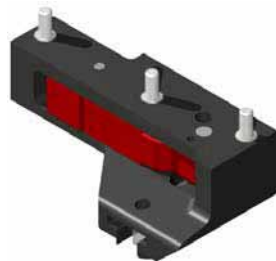
Typ: QRPF-106LH-501/502
Page 14



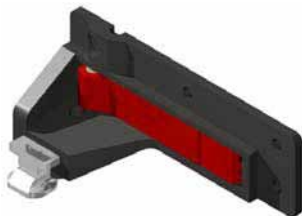
Typ: QRPB-107LS / RS
Page 15



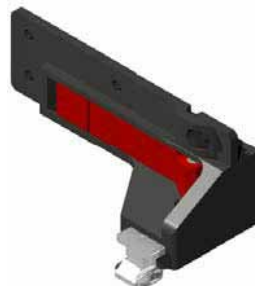
Typ: QRPB-107LD / RD -A-501
Page 16



Typ: QRPF-107L / R
Page 17



Typ: QRPF-107LD / RD
Page 18



Typ: QRP-200-CVF
Page 19

Track Line Orientation

Flat Panel Parts



Typ: QRP-SP108
Page 21



Typ: QRP-BP108-501
Page 22



Typ: QRP-BP108-503
Page 23



Typ: QRPBP-103LH
Page 24



Typ: QRPBP-104-80S
Page 25



Typ: QRP-BP-104-80D
Page 26



Typ: QRPBP-104-80D-50S
Page 27



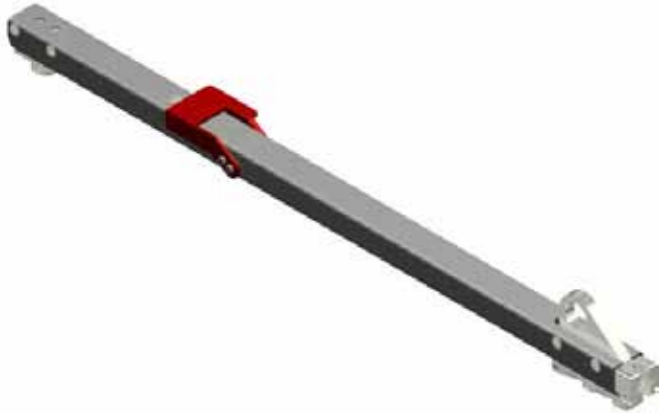
Typ: QRPBP104/80D-DA-501
Page 28



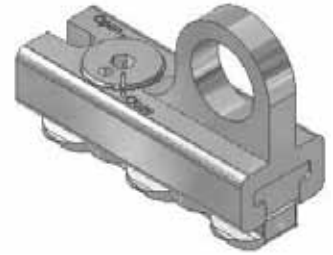
Typ: QRP-BP104/80D-503
Page 29

Track Line Orientation

Seat Systems

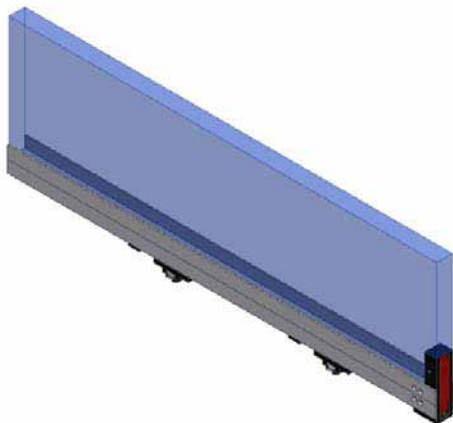


Typ: QRPW-202-252
Page 31

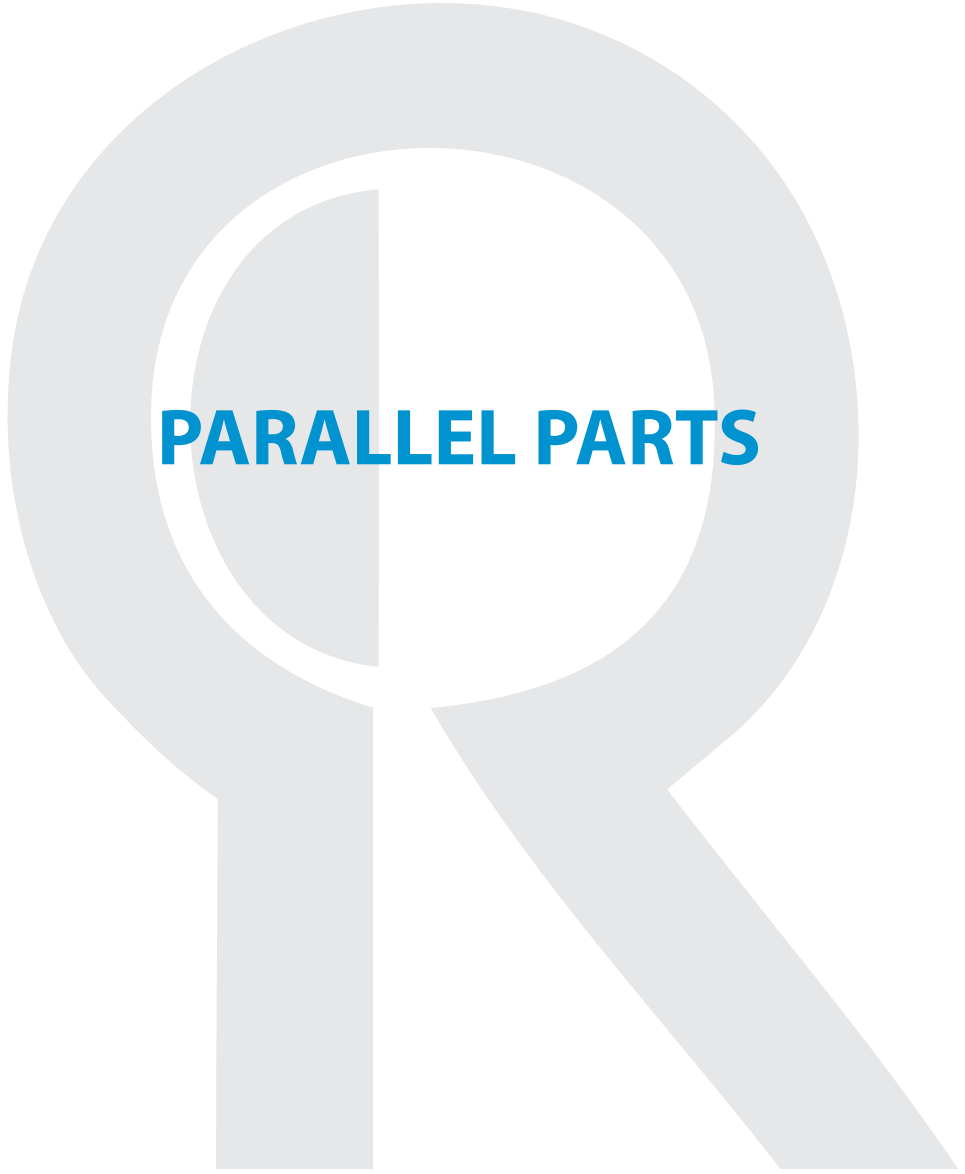


Typ: QRPS-252-10/20
Page 32

Wall Divider Systems



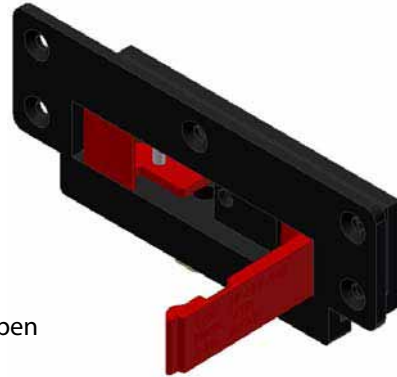
Typ: QRPBH-252
Page 33



QRP-1PHF-105

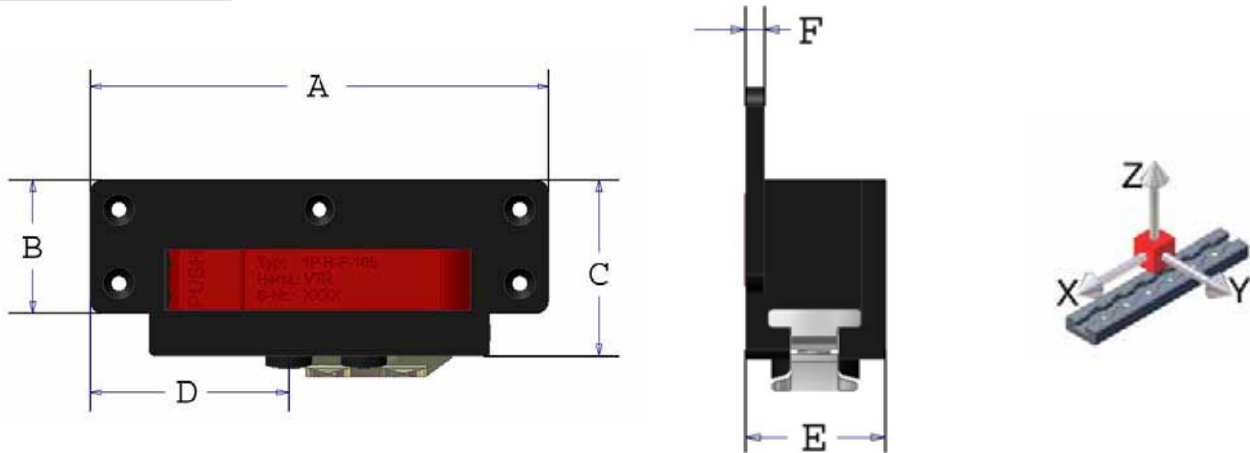


Close



Open

Main Dimensions



Technical Details

Dimensions ⁽¹⁾

A: 6.06" D: 3.62"
 B: 1.75" E: 1.18"
 C: 2.32" F: 0.16"

Weight

Approx. 0.9 lbs.

Load Capacity ⁽²⁾

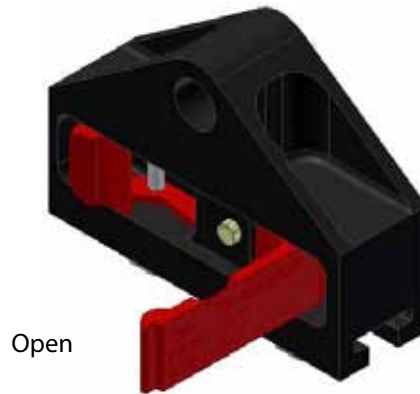
X < 6000 lbs.
 Y < 3000 lbs.
 Z < 4900 lbs.

(1) Detail drawings available upon request.

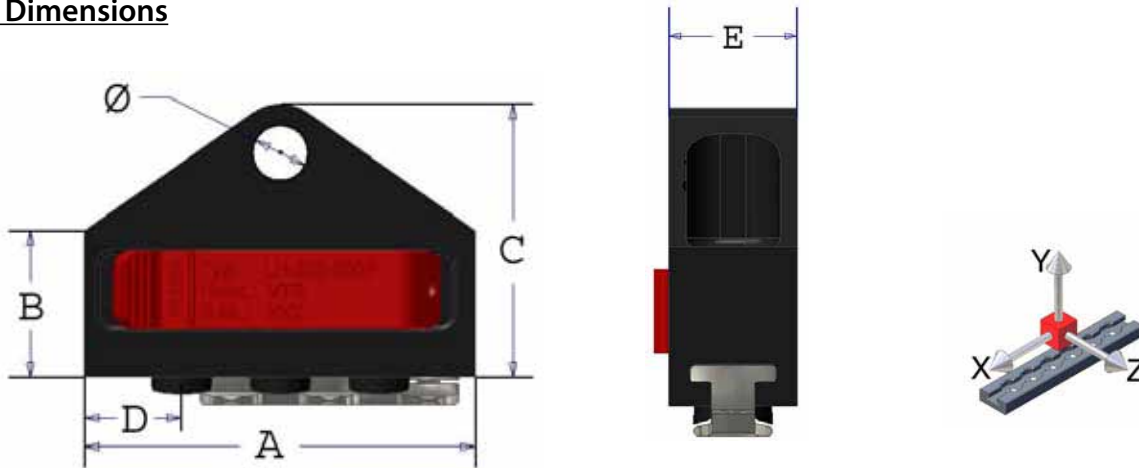
(2) Loads are considered without moments

Fitting application (double stud) or walls or structure members running parallel to track. Attachment to interior item is established via flange. Should the fitting be integrated into a honey comb structure it is recommended to use a load distribution plate.

QRPLH-252-200P



Main Dimensions



Technical Details

Dimensions ⁽¹⁾

A: 4.39" D: 0.98"
B: 1.48" E: 1.18"
C: 2.76" F: 0.56"

Weight

Approx. 0.94 lbs.

Load Capacity ⁽²⁾

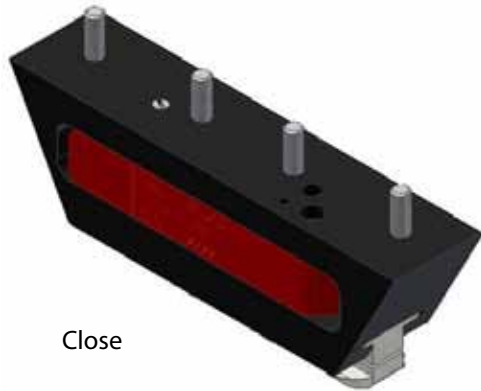
X < 7800 lbs.
Y < 4400 lbs.
Z < 7800 lbs.

(1) Detail drawings available upon request.

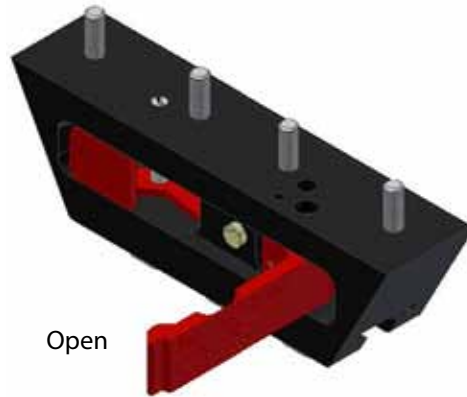
(2) Loads are considered without moments

Fitting application (triple stud) on racks or frame structure. Attachment to interior items is established with a single bolt or tube diameter 0.55". No moment is transferred in xz - plane.

QRPAL-252-100P

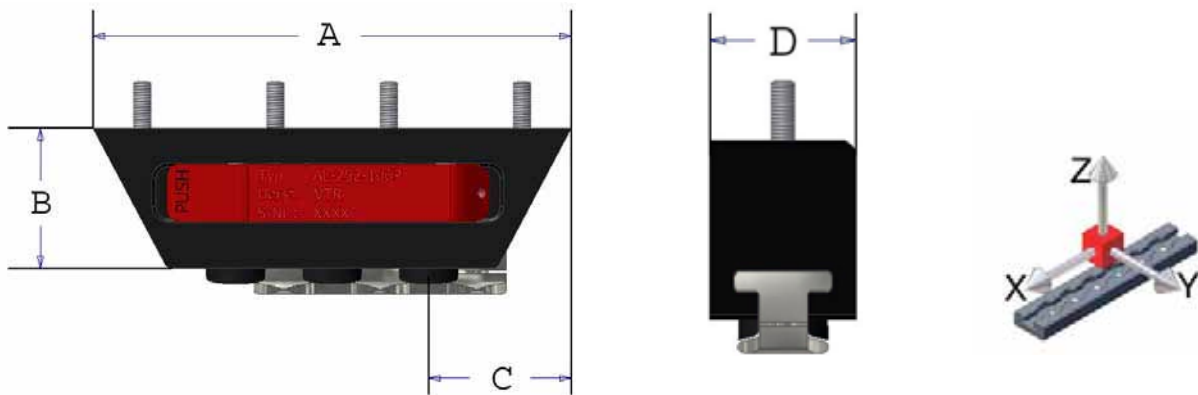


Close



Open

Main Dimensions



Technical Details

Dimensions⁽¹⁾

A: 4.96" D: 1.18"
B: 1.45"
C: 1.48"

Weight

Approx. 0.9 lbs.

Load Capacity⁽²⁾

X < 8000 lbs.
Y < 5000 lbs.
Z < 8000 lbs.

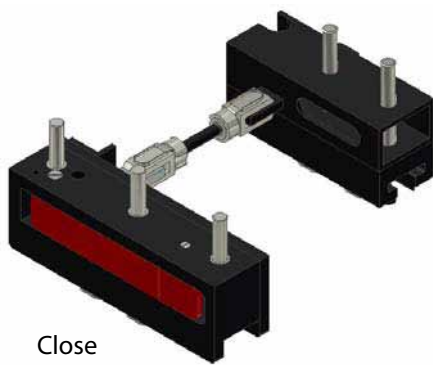
(1) Detail drawings available upon request.

(2) Loads are considered without moments

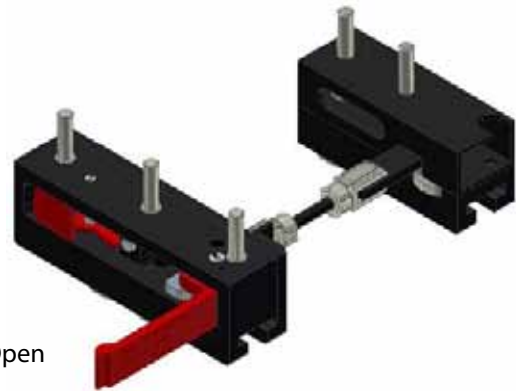
Fitting application (triple stud) on all interior structures as wall or rectangular tube. Structures as well as flat panel integration (for example bottom panels or cabinets). Attachment to interior item is solved by stand off bolts.



QRP1PMB-105-501/502

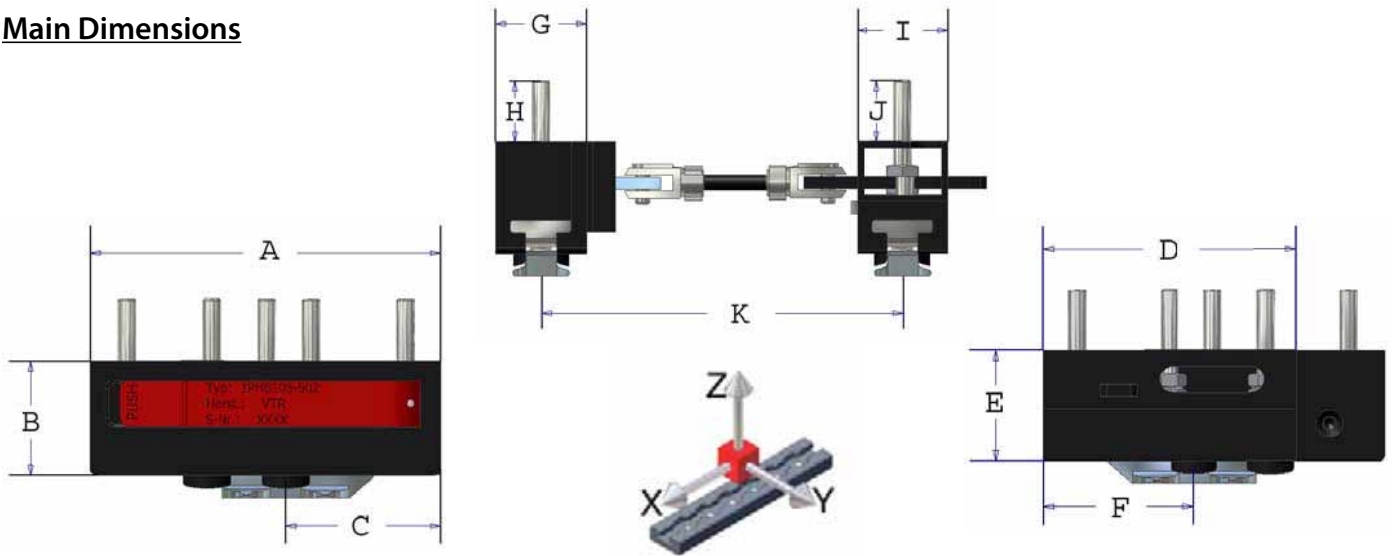


Close



Open

Main Dimensions



Technical Details

Dimensions ⁽¹⁾

A: 4.46" E: 1.46" I: 1.18"
 B: 1.46" F: 1.97" J: 0.79"
 C: 1.97" G: 1.18" K: min. 4.33" /
 D: 3.31" H: 0.79" max. variable

Weight

Approx. 1.52 lbs.

Load Capacity ⁽²⁾

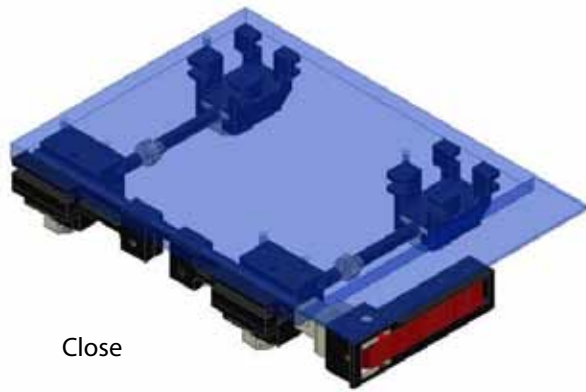
X < 6600 lbs.
 Y < 3300 lbs.
 Z < 6600 lbs.

(1) Detail drawings available upon request.

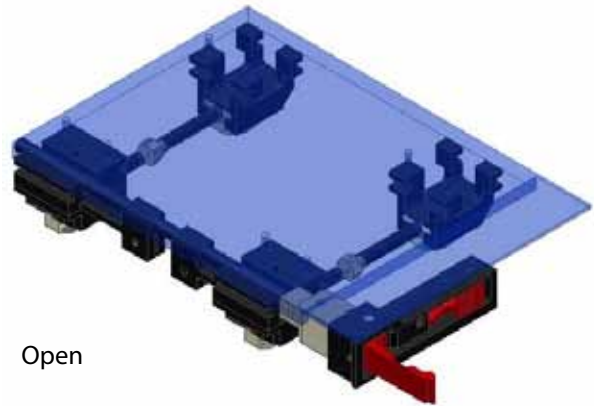
(2) Loads are considered without moments

Fitting application (double stud) designed for pallet systems where only on one side locking access is available. A left and right system is offered with an inboard and outboard locker. Attachment to interior item (pallet or other bottom panel or bottom structure) is solved by stand off bolts.

QRP-IN-252

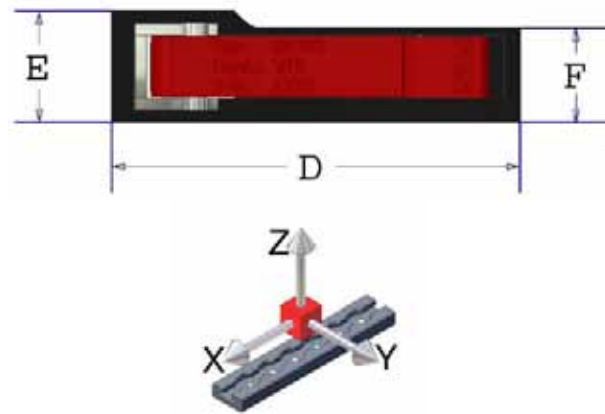
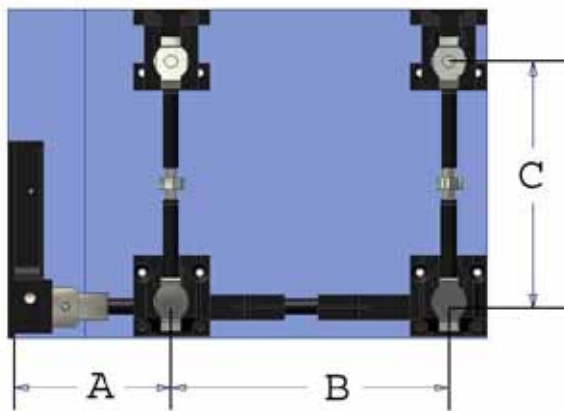


Close



Open

Main Dimensions



Technical Details

Dimensions ⁽¹⁾

A: min. 3.94" / max. variable
 B: min. 5.71" / max. variable
 C: min. 4.04" / max. variable

D: 4.04"
 E: 1.10"
 F: 0.93"

Weight

Approx. 2.53 lbs.

Load Capacity ⁽²⁾

X < 3300 lbs.
 Y < 2200 lbs.
 Z < 3300 lbs.

(1) Detail drawings available upon request.

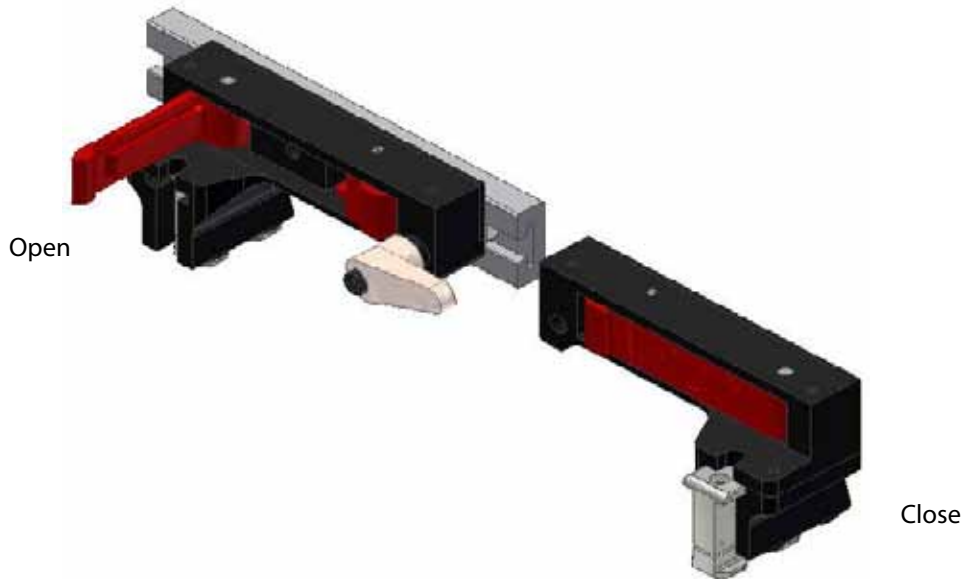
(2) Loads are considered without moments

Fitting application (single stud per locker) designed for doghouse fixations where a single actuator operates 4 or 6 locker. The dimensions A, B, C can be chosen by the customer. Since the locker unit runs in an extrusion profile the dimensions C (C') can be adapted to different seat track y- distances. The design detail allows an integration of the interior item into different aircrafts without changing the part.

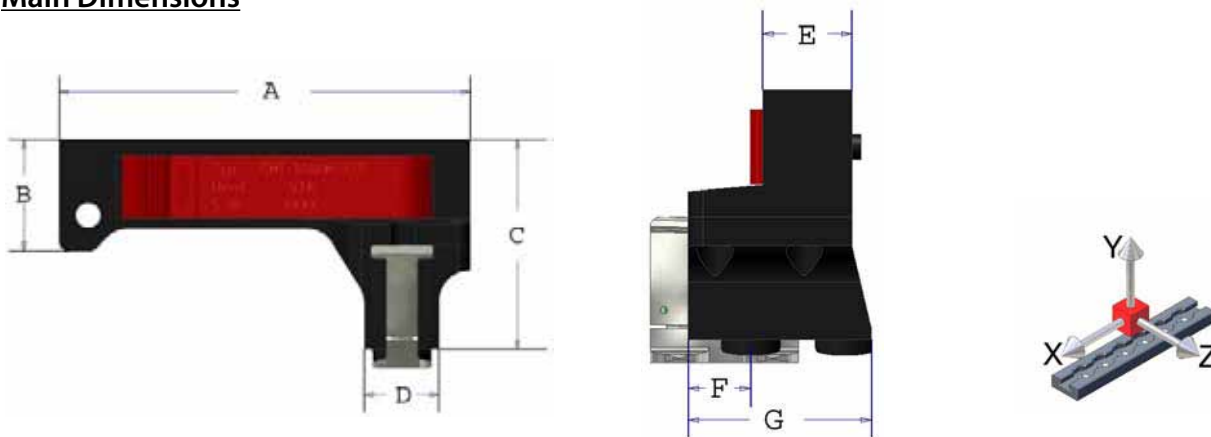
A large, light gray watermark of the QR logo is centered on the page. It consists of a stylized 'Q' and 'R' joined together. The 'Q' has a circular top and a vertical stem, while the 'R' has a curved top and a diagonal stem. The text 'CROSS TRACK PARTS' is overlaid on the 'Q' portion of the logo.

CROSS TRACK PARTS

QRPF-106LH-501/502



Main Dimensions



Technical Details

Dimensions ⁽¹⁾

A: 5.22" D: 0.94" G: 1.94"
 B: 1.42" E: 0.94"
 C: 2.66" F: 0.66"

Weight

Approx. 1.24 lbs.

Load Capacity ⁽²⁾

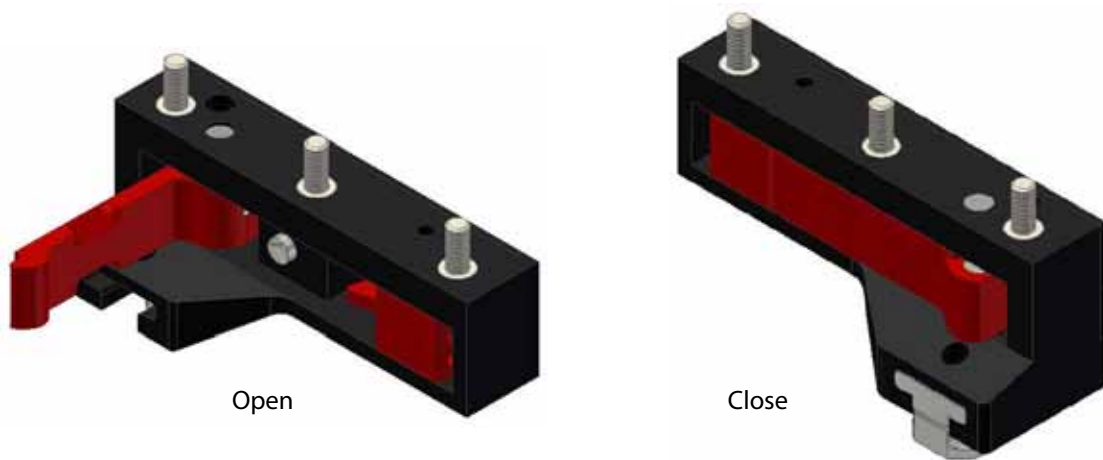
X < 3300 lbs.
 Y < 1100 lbs.
 Z < 4400 lbs.

(1) Detail drawings available upon request.

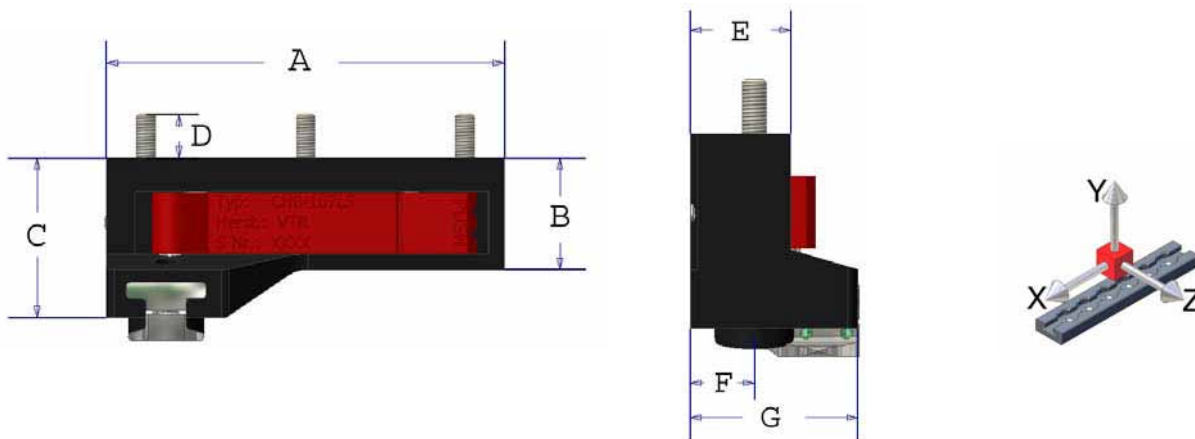
(2) Loads are considered without moments

Fitting application (double stud) designed for medical care stations or other cross track systems. The L/H fitting is mounted on a Y-profile and is adjustable in a certain range (+/- 5"). This design figure allows the usage of the care station in different aircraft due to the flexible adjustable fitting. The dimension C (height above track) allows the usage with high floor carpets.

QRPB-107LS/RS



Main Dimensions



Technical Details

Dimensions ⁽¹⁾

A: 3.94" D: 0.43" G: 1.34"
B: 1.10" E: 0.80"
C: 1.57" F: 0.51"

Weight

Approx. 0.57 lbs.

Load Capacity ⁽²⁾

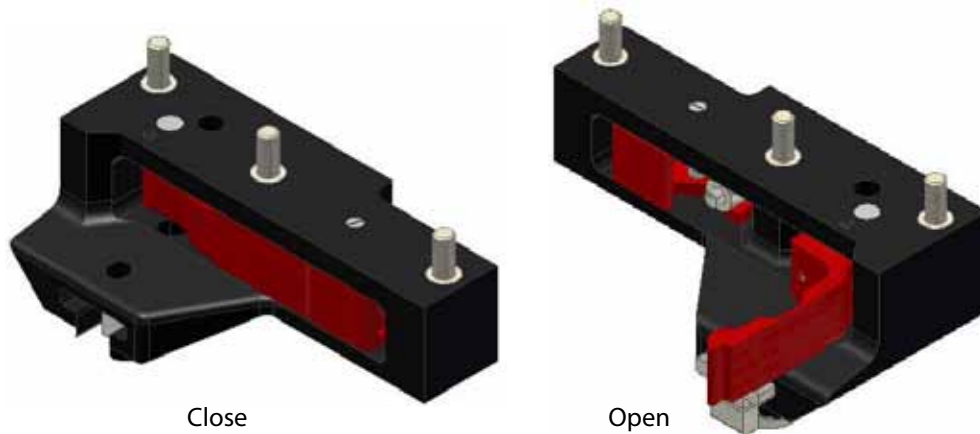
X < 2000 lbs.
Y < 1100 lbs.
Z < 2000 lbs.

(1) Detail drawings available upon request.

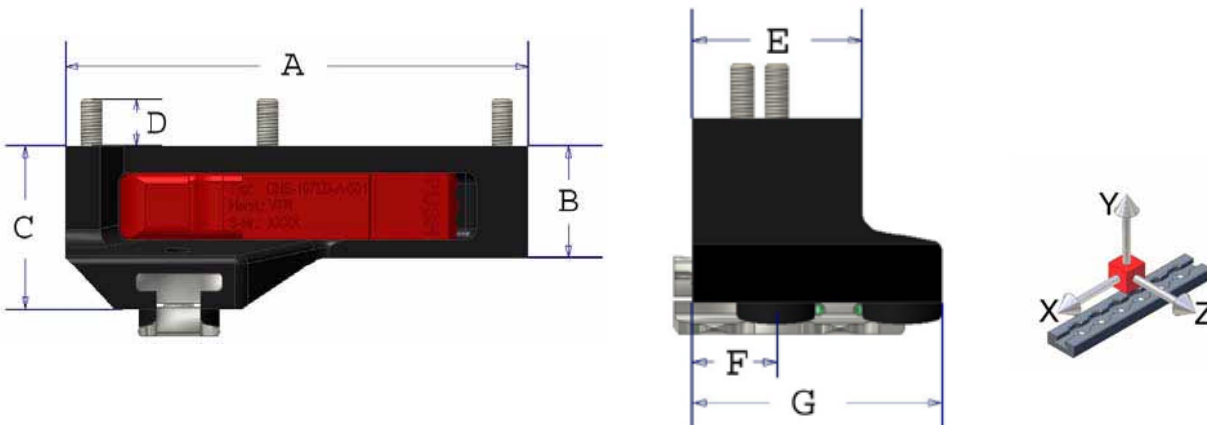
(2) Loads are considered without moments

Fitting application (single stud) designed for cross to x-direction walls/structures where lower loads shall be transferred. A left and right type is available. Attachment to interior item is solved by stand off bolts.

QRPB-107RD-A/LD-A



Main Dimensions



Technical Details

Dimensions ⁽¹⁾

A: 4.21" D: 0.43" G: 1.99"
 B: 1.00" E: 1.35
 C: 1.48" F: 0.67"

Weight

Approx. 0.8 lbs.

Load Capacity ⁽²⁾

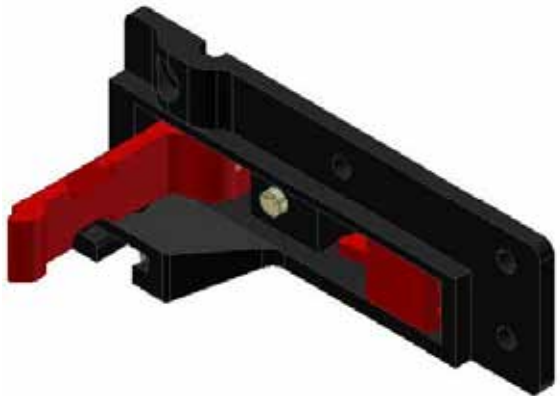
X < 4400 lbs.
 Y < 2200 lbs.
 Z < 6100 lbs.

(1) Detail drawings available upon request.

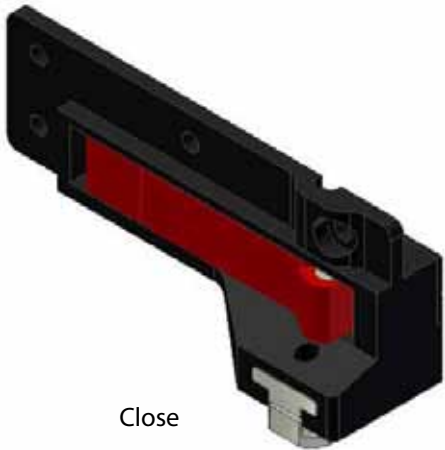
(2) Loads are considered without moments

Fitting application (double stud) designed for cross walls or other structures as well as bottom panels. A left and right type is available. Attachment to interior item is solved by stand off bolts.

QRPF-107R/L

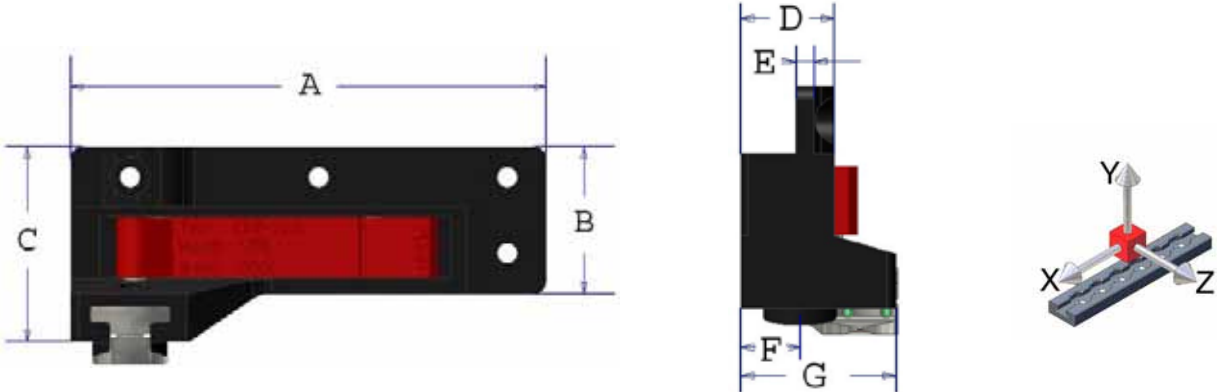


Open



Close

Main Dimensions



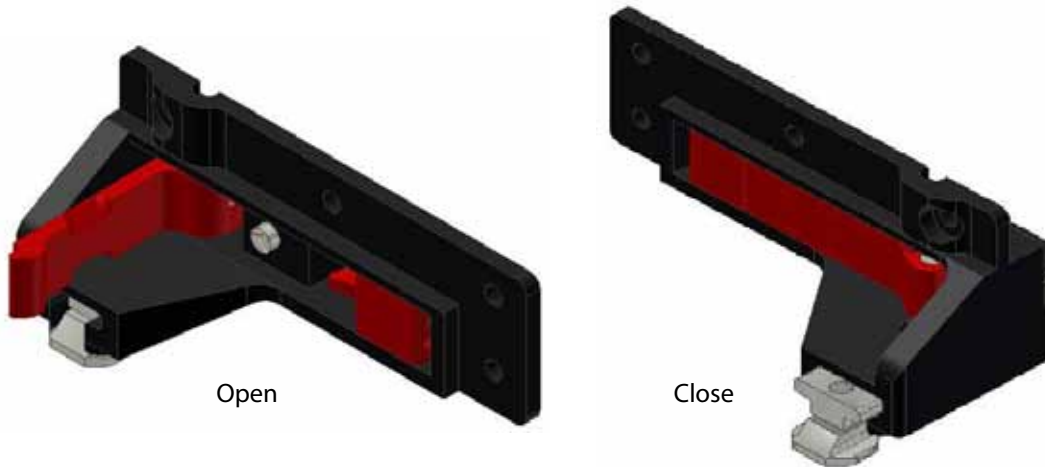
Technical Details

<u>Dimensions</u> ⁽¹⁾	<u>Weight</u>	<u>Load Capacity</u> ⁽²⁾
A: 4.73" D: 0.80" G: 1.34"	Approx. 0.42 lbs.	X < 4000 lbs. Y < 2000 lbs. Z < 4000 lbs.
B: 1.46" E: 0.16"		
C: 1.93" F: 0.51"		

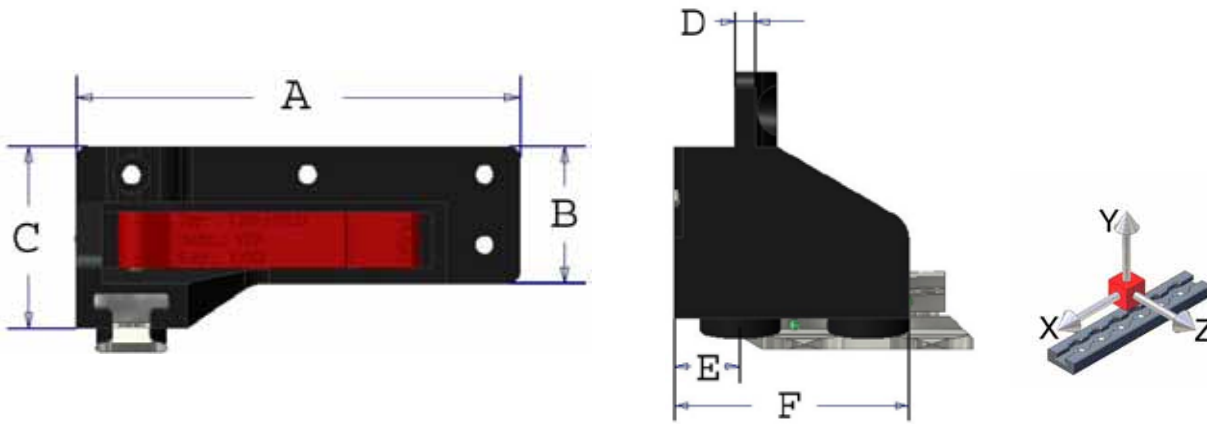
(1) Detail drawings available upon request.
 (2) Loads are considered without moments

Fitting application (single stud) designed for cross to x-direction walls/structures where lower loads shall be transferred. A left and right type is available. Attachment to interior item is solved via flange with #10 holes (dia. 0.20"). The fitting shape is tailored where the dimension "C" is limited.

QRPF-107RD/LD



Main Dimensions



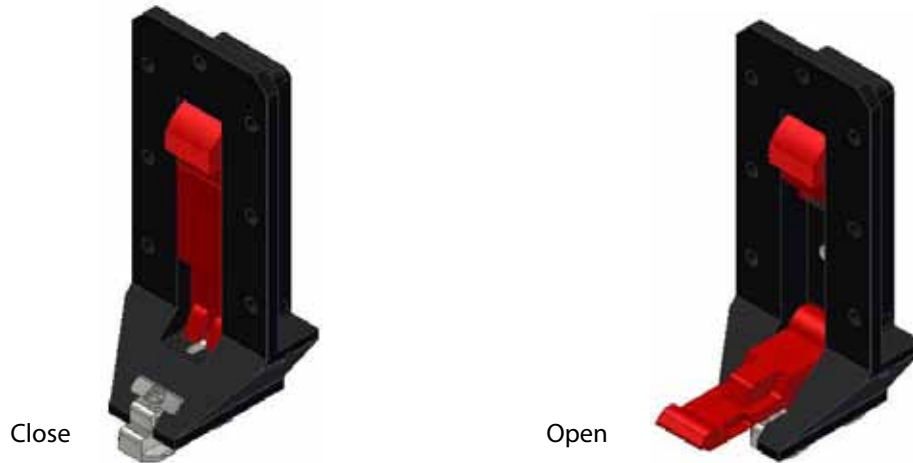
Technical Details

<u>Dimensions</u> ⁽¹⁾	<u>Weight</u>	<u>Load Capacity</u> ⁽²⁾
A: 4.73" B: 1.46" C: 1.93" D: 0.16" E: 0.51" F: 1.83"	Approx. 0.7 lbs.	X < 5400 lbs. Y < 3300 lbs. Z < 5400 lbs.

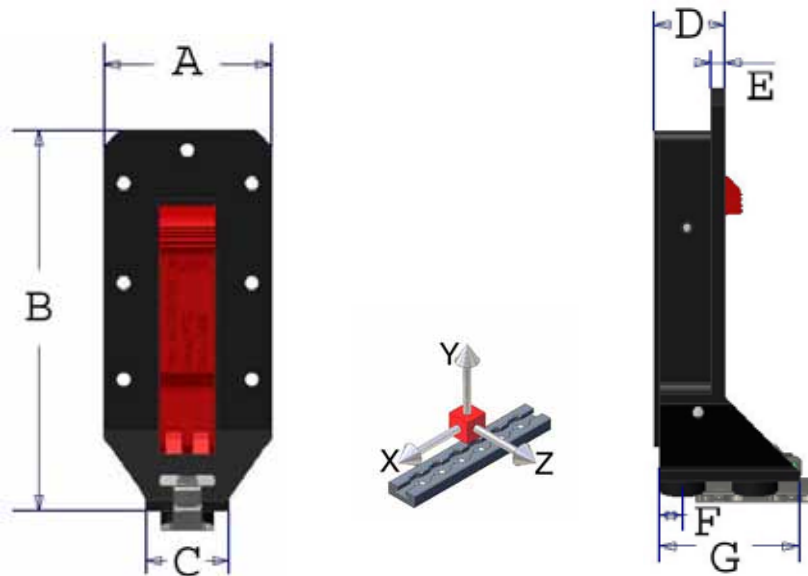
(1) Detail drawings available upon request.
 (2) Loads are considered without moments

Fitting application (double stud) designed for cross walls or other structure running in Y direction of the A/C. A left and right type is available. Attachment to the interior items is solved by flange and screw holes (dia. 0.20").

QRP-200-CVF



Main Dimensions

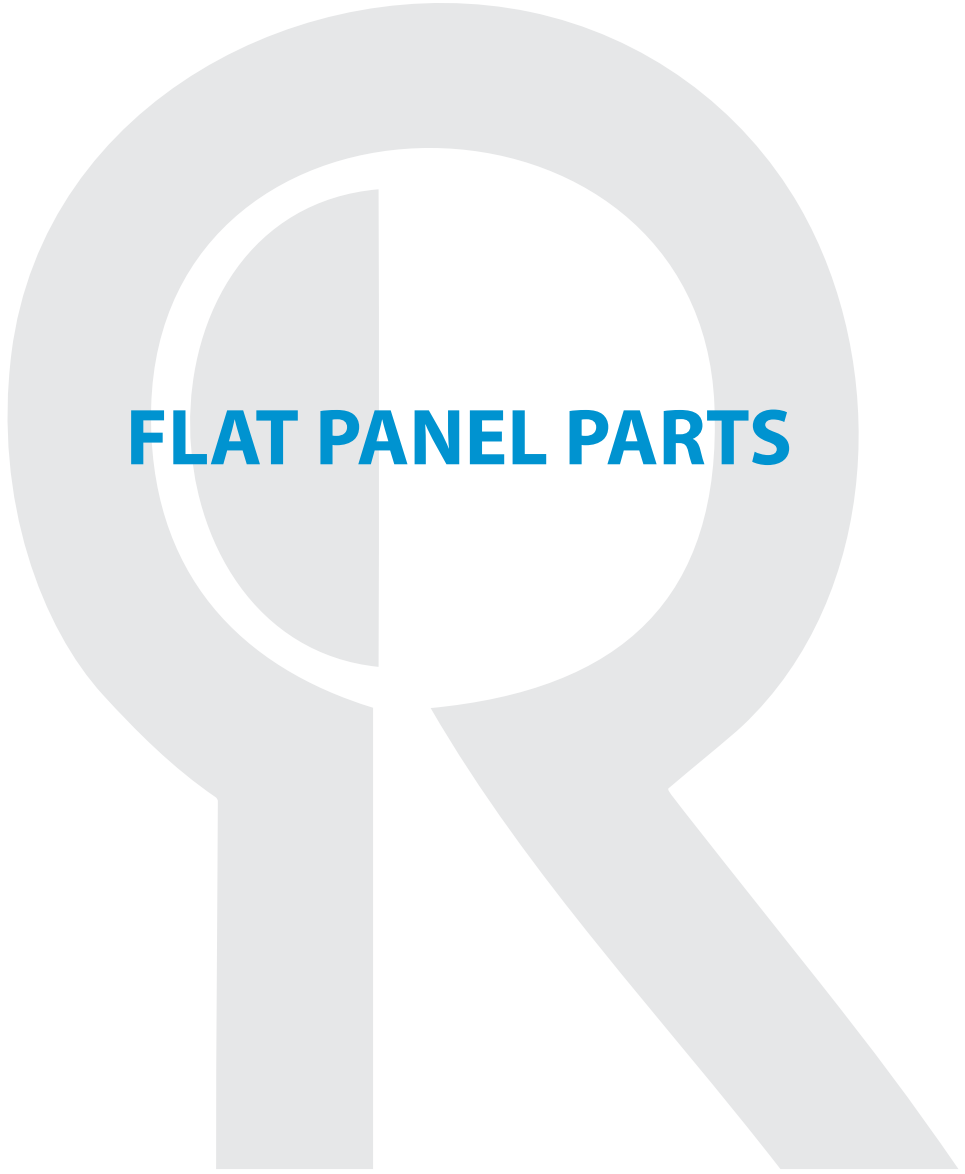


Technical Details

<u>Dimensions</u> ⁽¹⁾	<u>Weight</u>	<u>Load Capacity</u> ⁽²⁾
A: 2.40" D: 0.98" G:1.93"	Approx. 0.86 lbs.	X < 7000 lbs.
B: 5.47" E: 0.20"		Y < 5000 lbs.
C: 1.18" F: 0.31"		Z < 7000 lbs.

- (1) Detail drawings available upon request.
- (2) Loads are considered without moments

Fitting application (double stud) designed for cross walls or other structure running in Y direction or the aircraft. The surrounding attachment flange with 7 attachment holes provides a perfect integration into a honey comb structure. The fitting shape is tailored where the dimension "A" is limited.



QRPSP-108

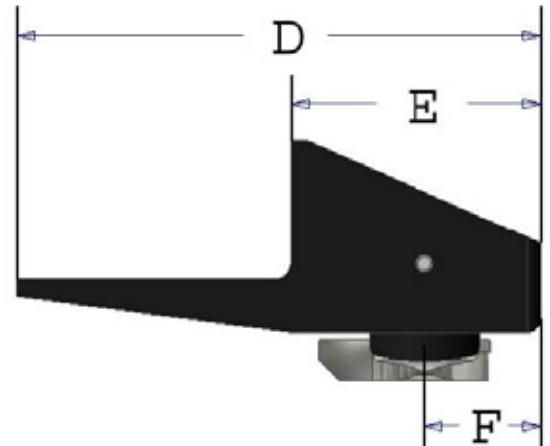
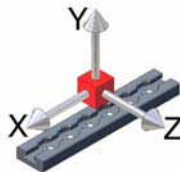
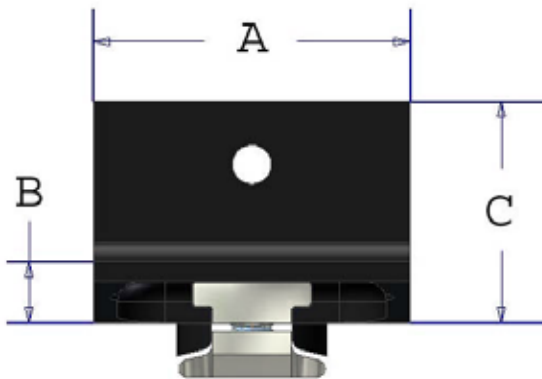


Close



Open

Main Dimensions



Technical Details

Dimensions⁽¹⁾

A: 1.57" D: 3.01"
B: 0.30" E: 1.44"
C: 1.10" F: 0.67"

Weight

Approx. 0.35 lbs.

Load Capacity⁽²⁾

X < 2200 lbs.
Y < 1700 lbs.
Z < 2200 lbs.

(1) Detail drawings available upon request.

(2) Loads are considered without moments

Fitting application (single stud) designed for lower loads in conjunction with a base plate where equipment or other low weight items shall be QC-fixed in an aircraft. Locking or unlocking is achieved means by using a coin to turn the locker wheel 180°.

QRP-BP108-501

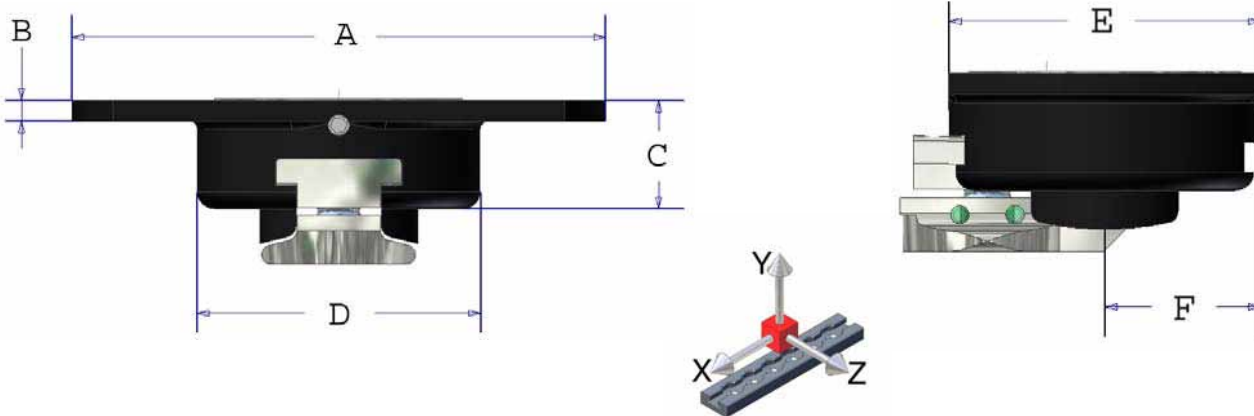


Close



Open

Main Dimensions



Technical Details

<u>Dimensions</u> ⁽¹⁾	<u>Weight</u>	<u>Load Capacity</u> ⁽²⁾
A: 2.52" D: 3.01" B: 0.10" E: 1.44" C: 0.51" F: 0.67"	Approx. 0.17 lbs.	X < 2200 lbs. Y < 1700 lbs. Z < 2200 lbs.

- (1) Detail drawings available upon request.
 (2) Loads are considered without moments

Fitting application (single stud) designed for lower loads in conjunction with a base plate where equipment or other low weight items shall be QC-fixed in an aircraft. Locking or unlocking is achieved by using a coin to turn the locker wheel 180°. Shape is made for integration in an 1/2 inch honey comb panel or aluminum panels. Usage on all spots where standard tracks available (on floor, side wall or ceiling). BP108 is specially designed for QC-fixations of equipment in mission or ambulance aircrafts.

QRP-BP108-503

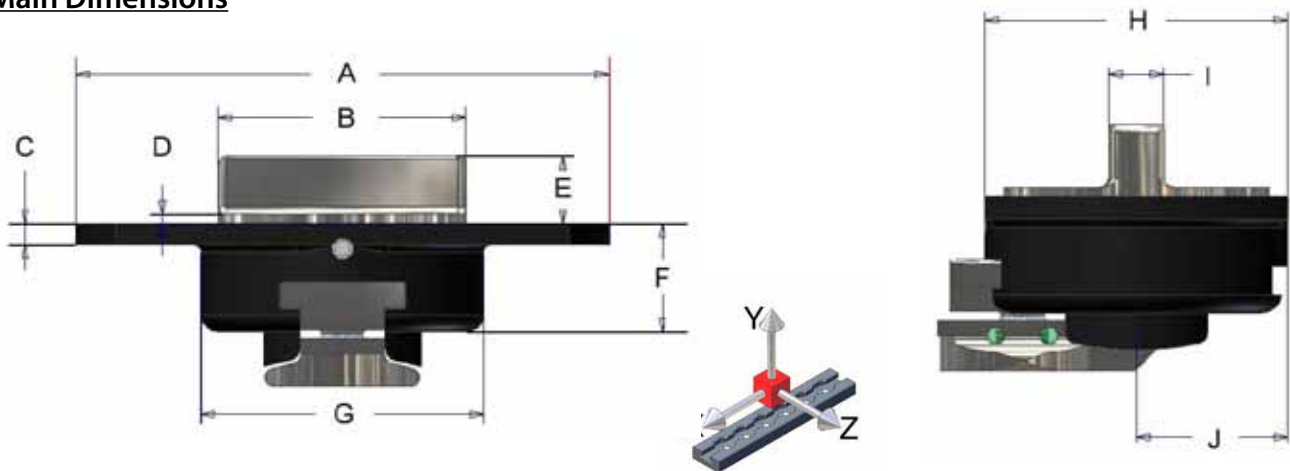


Close



Open

Main Dimensions



Technical Details

Dimensions ⁽¹⁾

A: 2.52" E: 0.31" H: 1.34"
 B: 1.17" F: 0.51" I: 0.24"
 C: 0.10" G: 1.34" J: 0.67"
 D: 0.05"

Weight

Approx. 0.19 lbs.

Load Capacity ⁽²⁾

X < 2200 lbs.
 Y < 1700 lbs.
 Z < 2200 lbs.

(1) Detail drawings available upon request.

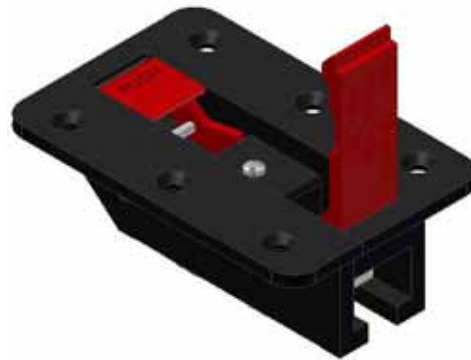
(2) Loads are considered without moments

Fitting application (single stud) designed for lower loads in conjunction with a base plate where equipment or other low weight items shall be QC-fixed in an aircraft. Locking or unlocking is achieved by using a coin to turn the locker wheel 180°. Shape is made for integration in an 1/2 inch honey comb panel or aluminum panels. Usage on all spots where standard tracks available (on floor, side wall or ceiling). BP108 is specially designed for QC-fixations of equipment in mission or ambulance aircrafts.

QRPBP-103LH

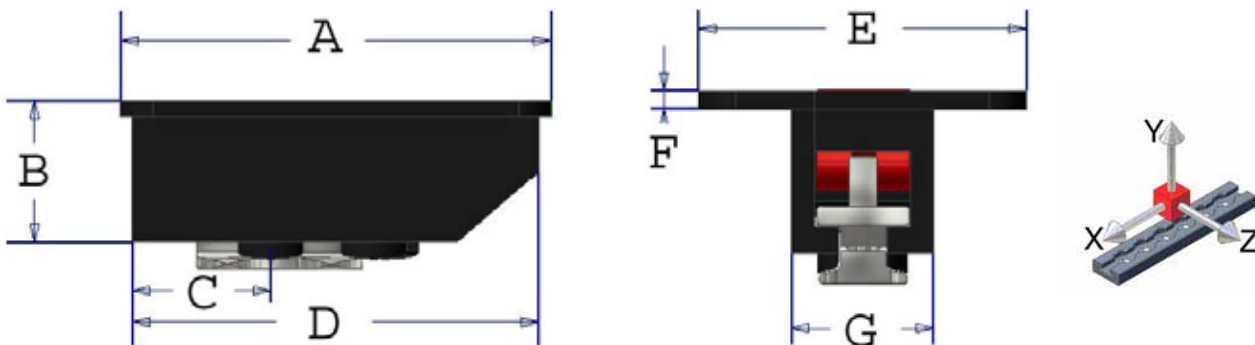


Close



Open

Main Dimensions



Technical Details

Dimensions ⁽¹⁾

A: 4.17" D: 3.94" G: 1.20"
 B: 1.38" E: 2.78"
 C: 1.46" F: 0.16"

Weight

Approx. 0.74 lbs.

Load Capacity ⁽²⁾

X < 4400 lbs.
 Y < 3300 lbs.
 Z < 4400 lbs.

(1) Detail drawings available upon request.

(2) Loads are considered without moments

Fitting application (double stud) designed for use on thick bottom panels (approx. 1"). Means integration in all interior items based on a structural bottom panel consisting of honey comb or aluminum or glass reinforced plastics as: cabinets, stowage houses, galleys, credenza, toilets and also doghouses where access is provided from inside of the cabinet.

QRPBP-104/80S

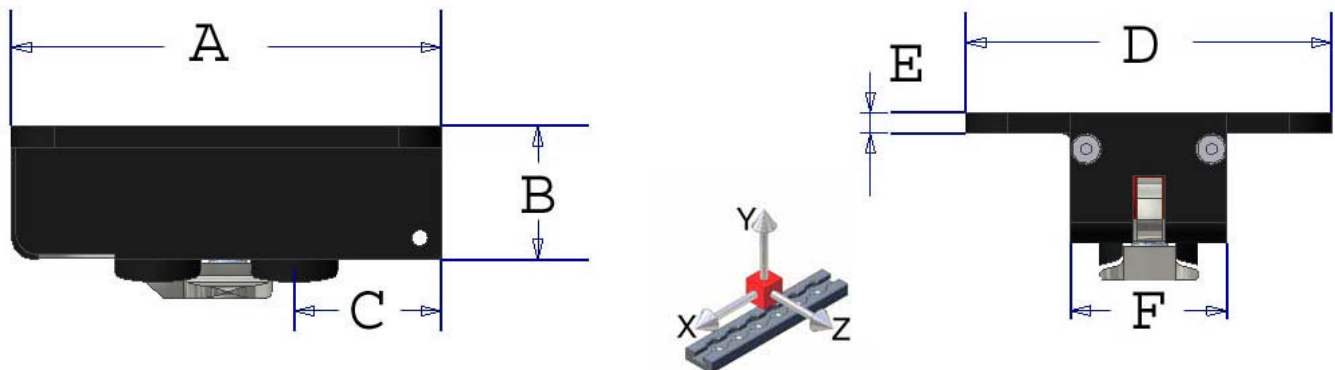


Close



Open

Main Dimensions



Technical Details

Dimensions ⁽¹⁾

A: 3.15" D: 2.76"
 B: 0.98" E: 0.16"
 C: 1.07" F: 1.18"

Weight

Approx. 0.45 lbs.

Load Capacity ⁽²⁾

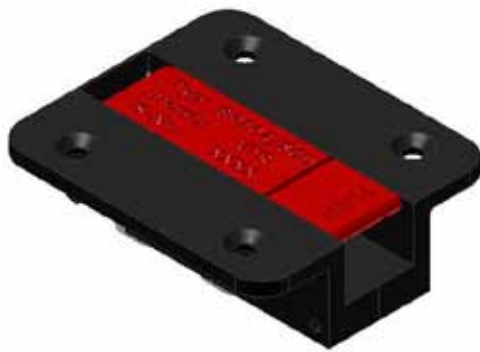
X < 3300 lbs.
 Y < 2200 lbs.
 Z < 3300 lbs.

(1) Detail drawings available upon request.

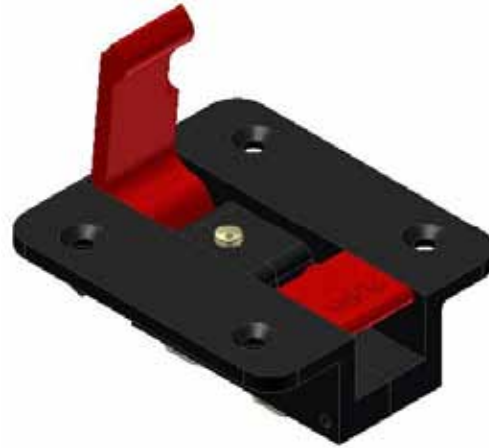
(2) Loads are considered without moments

Fitting application (single stud) designed for use on bottom panels (apprx. 1/2" to 3/4") with the load to transferable of a single stud. Integration in all interior items based on a structural bottom panel consisting of honey comb or aluminum or glass reinforced plastics as: cabinets, stowage houses, galleys, credenza, toilets and also doghouses where access is provided from inside of the cabinet.

QRPBP-104/80D

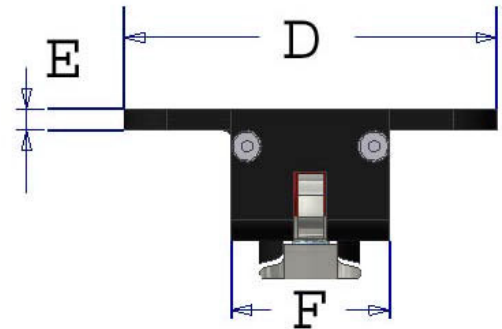
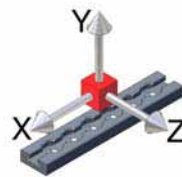
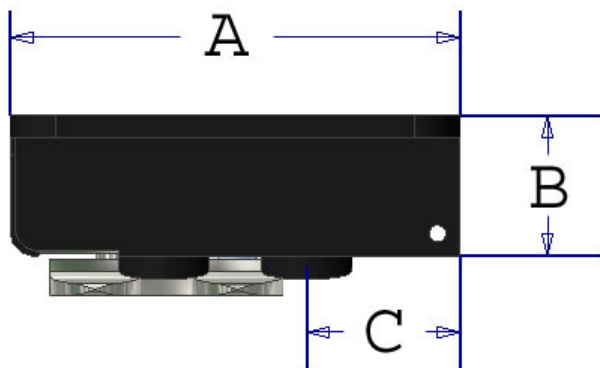


Close



Open

Main Dimensions



Technical Details

Dimensions ⁽¹⁾

A: 3.15" D: 2.76"
 B: 0.98" E: 0.16"
 C: 1.07" F: 1.18"

Weight

Approx. 0.68 lbs.

Load Capacity ⁽²⁾

X < 4400 lbs.
 Y < 3300 lbs.
 Z < 4400 lbs.

(1) Detail drawings available upon request.

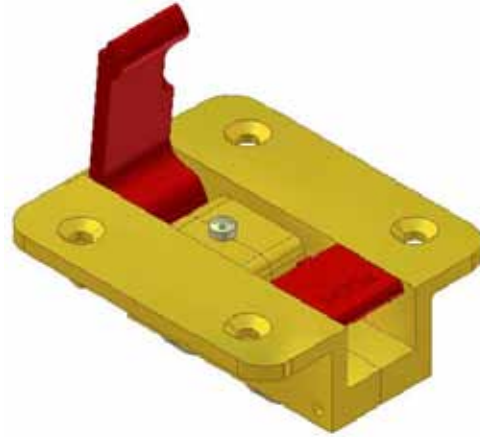
(2) Loads are considered without moments

Fitting application (double stud) designed for use on bottom panels (approx. 1/2" to 3/4"). Integration in all interior items based on a structural bottom panel consisting of honey comb or aluminum or glass reinforced plastics as: cabinets, stowage houses, galleys, credenza, toilets and also doghouses where access is provided from inside of the cabinet.

QRPBP-104/80/D-505

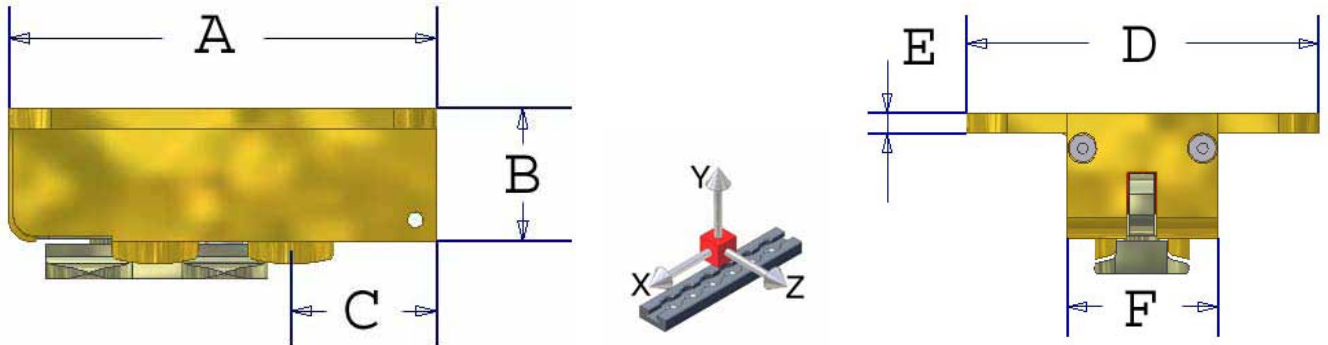


Close



Open

Main Dimensions



Technical Details

Dimensions ⁽¹⁾

A: 3.15" D: 2.76"
 B: 0.98" E: 0.16"
 C: 1.07" F: 1.18"

Weight

Approx. 0.68 lbs.

Load Capacity ⁽²⁾

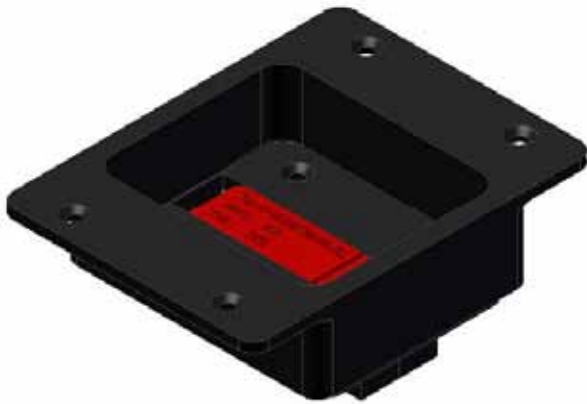
X < 4400 lbs.
 Y < 3300 lbs.
 Z < 4400 lbs.

(1) Detail drawings available upon request.

(2) Loads are considered without moments

Fitting application (double stud) designed for use on bottom panels (approx. 1/2" to 3/4") with a high load to transfer. The housing and all other loaded members are made from high quality steel. Integration in all interior items based on a structural bottom panel consisting of honey comb or aluminum or glass reinforced plastics as: cabinets, stowage houses, galleys, credenza, toilets and also doghouses where access is provided from inside of the cabinet.

QRP-BP104/80D-DA-501

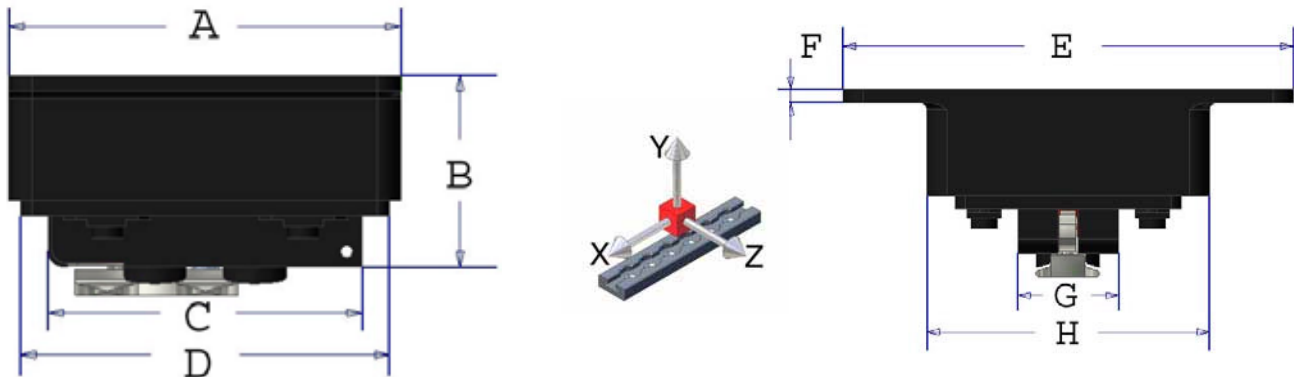


Close



Open

Main Dimensions



Technical Details

Dimensions ⁽¹⁾

A: 3.94" D: 3.70" G: 1.18"
 B: 1.93" E: 5.28" H: 3.31"
 C: 3.15" F: 0.16"

Weight

Approx. 1.34 lbs.

Load Capacity ⁽²⁾

X < 3964 lbs.
 Y < 2200 lbs.
 Z < 3964 lbs.

(1) Detail drawings available upon request.

(2) Loads are considered without moments

For further necessity of adjustment the core fitting (BP-104) is mounted in a frame housing which allows X-Y fine adjustment of at least $\pm 0.2"$. The frame is available in two height versions. Fitting application (double stud) designed for use on bottom panels (approx. 1/2" to 1"). Integration in all interior items based on a structural bottom panel consisting of honey comb or aluminum or glass reinforced plastics as: cabinets, stowage houses, galleys, credenza, toilets and also doghouses where access is provided from inside of the cabinet.

QRP-BP104/80D-503

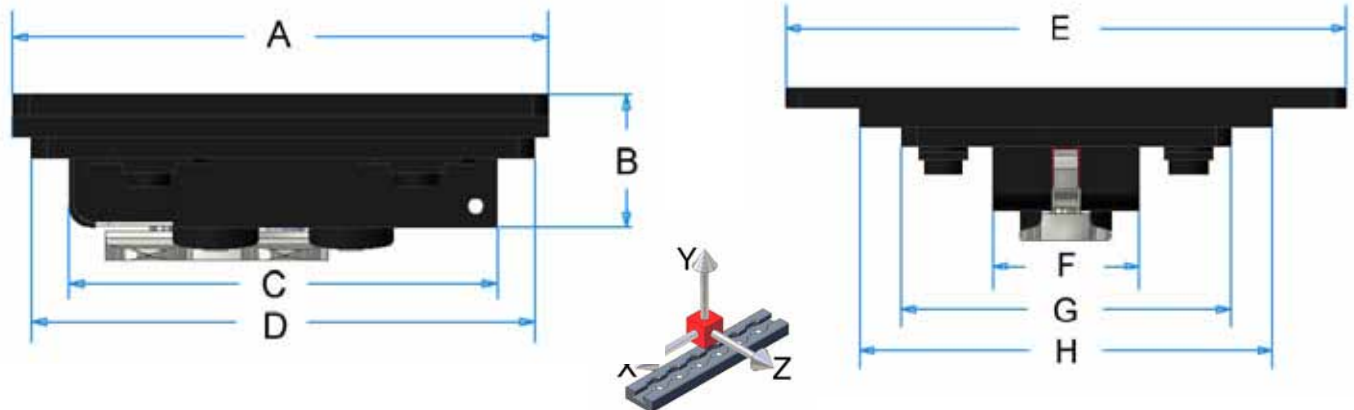


Close



Open

Main Dimensions



Technical Details

Dimensions ⁽¹⁾

A: 3.94" D: 3.31" G: 2.64"
 B: 0.98" E: 4.49" H: 3.31"
 C: 3.15" F: 1.18"

Weight

Approx. 1.03 lbs.

Load Capacity ⁽²⁾

X < 3964 lbs.
 Y < 2200 lbs.
 Z < 3964 lbs.

(1) Detail drawings available upon request.

(2) Loads are considered without moments

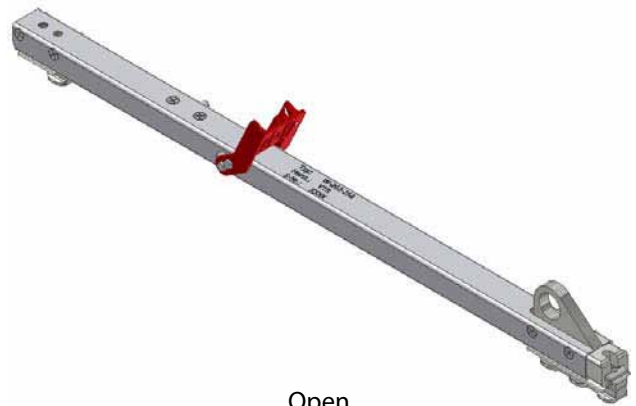
For further necessity of adjustment the core fitting (BP-104) is mounted in a frame housing which allows X-Y fine adjustment of at least $\pm 0.2"$. The frame is available in two height versions. Fitting application (double stud) designed for use on bottom panels (approx. 1/2" to 1"). Integration in all interior items based on a structural bottom panel consisting of honey comb or aluminum or glass reinforced plastics as: cabinets, stowage houses, galleys, credenza, toilets and also doghouses where access is provided from inside of the cabinet.



QRPW-202-252

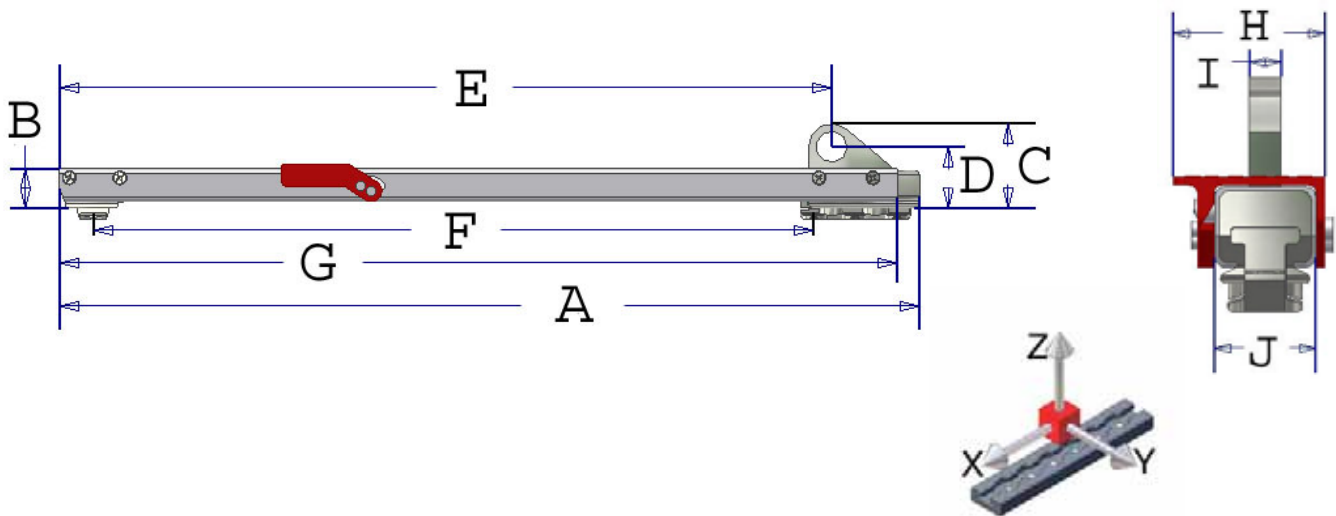


Close



Open

Main Dimensions



Technical Details

Dimensions ⁽¹⁾

A: 20.69"	E: 18.59"	I: 0.31"
B: 0.94"	F: 18.0"	J: 0.98"
C: 3.03"	G: 20.16"	
D: 1.48"	H: 1.48"	

Weight

Approx. 1.94 lbs.

Load Capacity ⁽²⁾

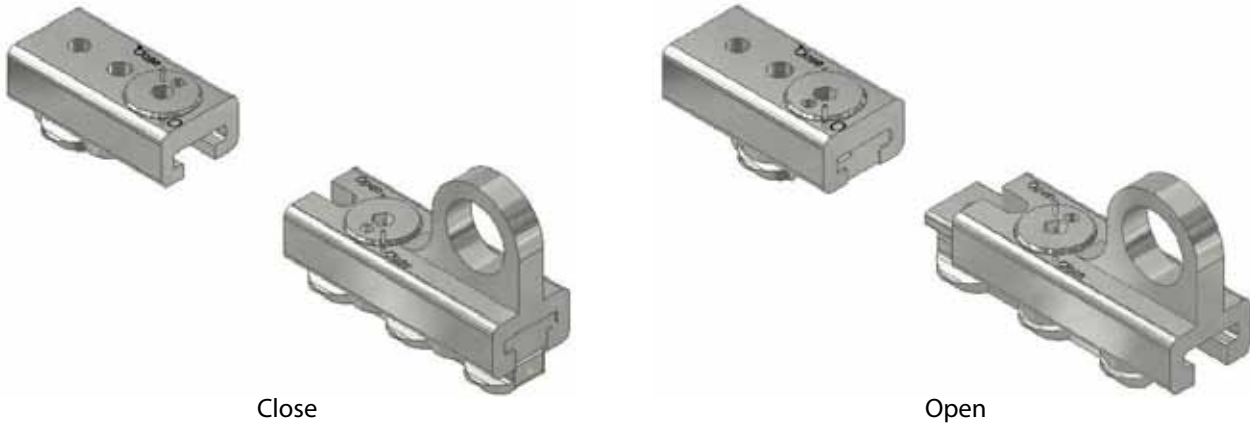
Depending on customer seat leg design

(1) Detail drawings available upon request.

(2) Loads are considered without moments

Fitting application designed for typical seat legs (forward and aft) attachment. The fitting design connects forward and aft stud assembly with a brace which incorporates the locking lever. The customer may also choose a hidden locking system depending on their seat leg design structure. Aft stud assembly comprises a triple stud in combination with a ball bearing. Forward stud assembly (single) allows screw attachment. Length could be customized.

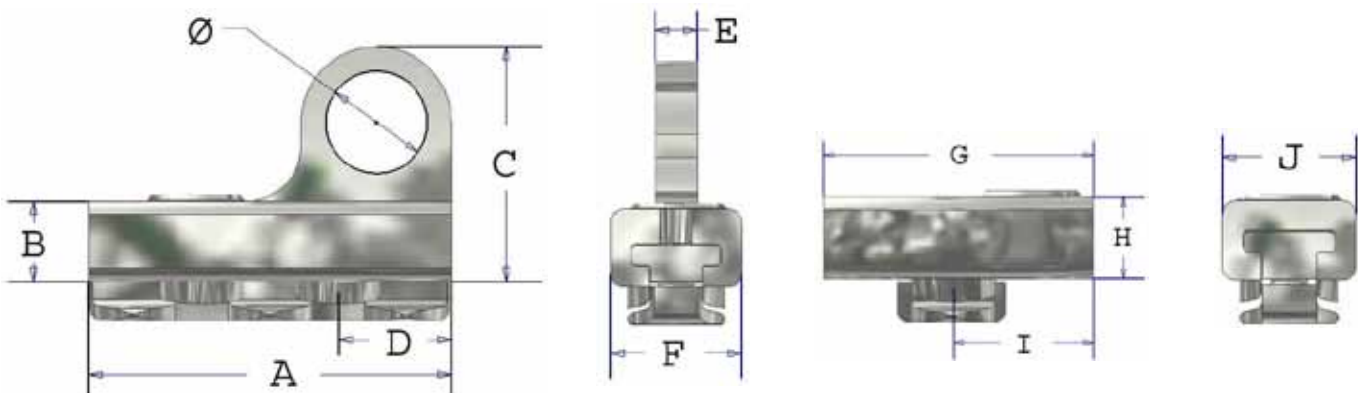
QRPS-252-10/20



Close

Open

Main Dimensions



Technical Details

Dimensions ⁽¹⁾

A: 2.67" E: 0.31" I: 1.02"
 B: 0.59" F: 0.98" J: 3.31"
 C: 1.72" G: 1.97" Ø: 0.75"
 D: 0.83" H: 0.59"

Weight

Approx. 0.63 lbs.

Load Capacity ⁽²⁾

X < 11000 lbs.
 Y < 4400 lbs.
 Z < 11000 lbs.

(1) Detail drawings available upon request.

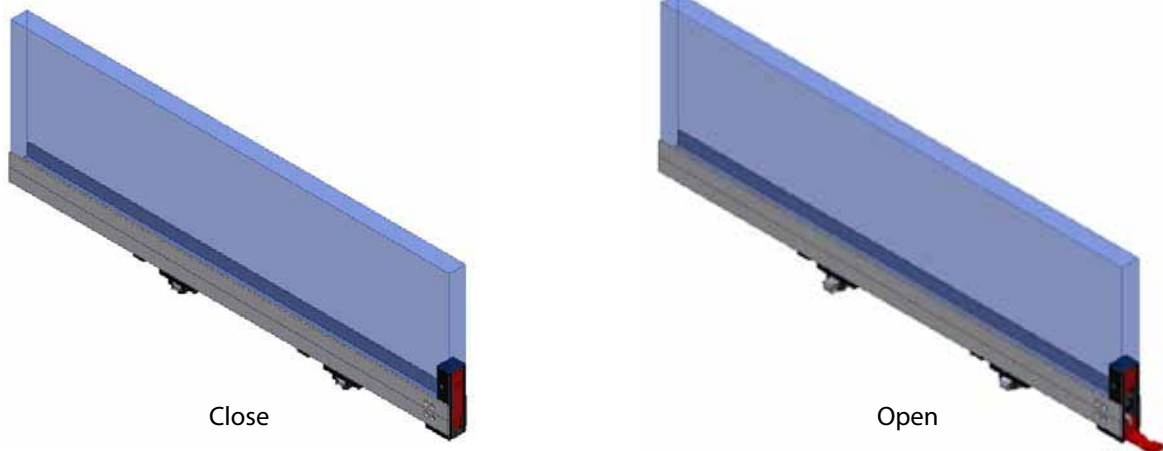
(2) Loads are considered without moments

Fitting application (triple stud) for high loads and ball bearing connection. Lock and unlocking is achieved using a hex key. Typical application is for aft seat legs or tubing frame racks.

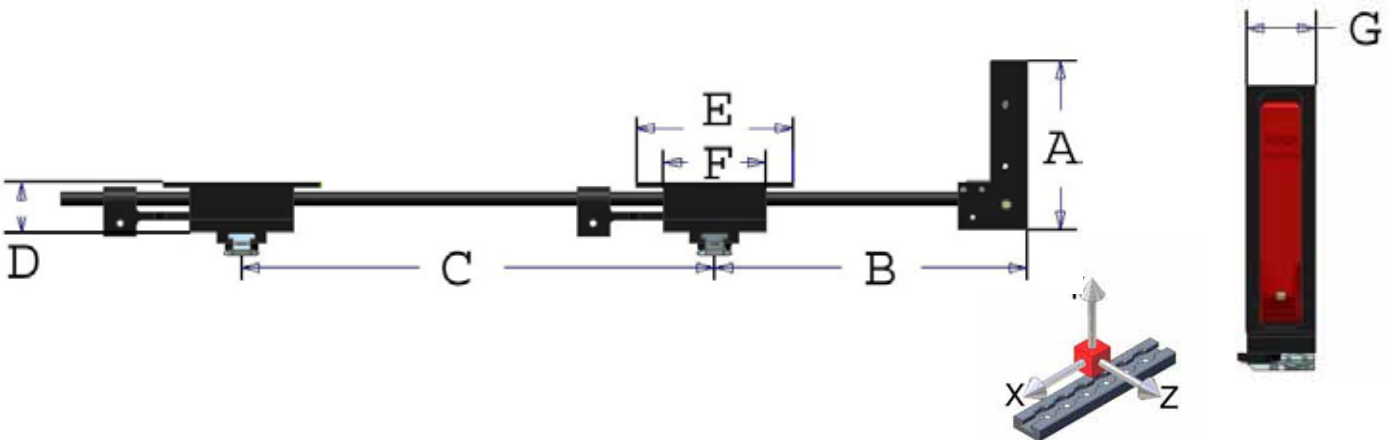
A large, light gray watermark of the QR logo is centered on the page. It consists of a stylized 'Q' and 'R' joined together. The 'Q' has a circular top and a vertical stem, while the 'R' has a curved top and a diagonal stem. The text 'WALL DIVIDER SYSTEMS' is overlaid on the 'Q' portion of the logo.

WALL DIVIDER SYSTEMS

QRPBH-252



Main Dimensions



Technical Details

Dimensions ⁽¹⁾

A: 3.66"
 B: min. 4.00" / max. variable
 C: min. 6.38" / max. variable
 D: 1.08"
 E: 3.43"
 F: 2.24"
 G: 1.02"

Weight

Approx. 1.32 lbs.

Load Capacity ⁽²⁾

X < 3300 lbs.
 Y < 2200 lbs.
 Z < 3300 lbs.

(1) Detail drawings available upon request.

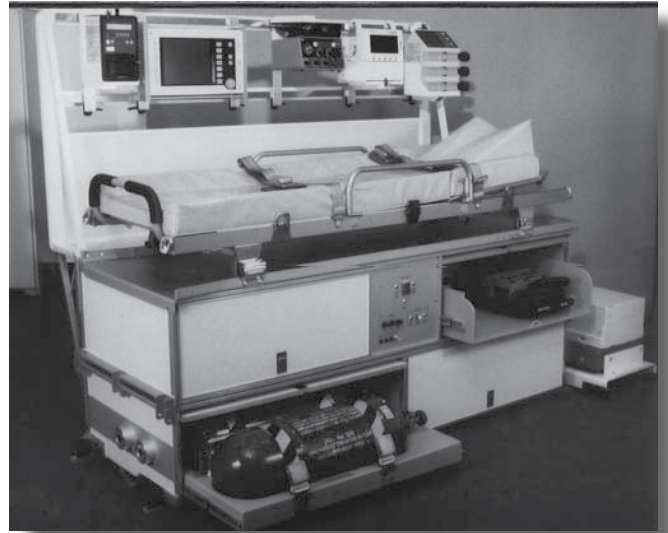
(2) Loads are considered without moments

Conventional track attachment designed for bulkhead QC-application. Consists of:

- Inboard actuating unit
- QCTL locker (1 per track) sustaining 2000 lbs.
- The system is flexible to different lateral track locations
- No 1/2" shifting

On the lower edge of the bulkhead, a small channel provides space to fit the system.

Examples and References



QRP Sales Contacts

Contact	Position	Phone	Fax	Cell	Email	Location	Areas Served
Michael D. Kievit	Vice President of Sales & Marketing	910-371-0700	910-371-9055	910-616-0207	mkievit@qrp-inc.com	Leland, NC	Global
Thomas Woods	Director of Sales - Midwest Region			513-266-7275	twoods@qrp-inc.com	Cincinnati, OH	MN, IA, WI, IL, MI, KY, IN, TN, WV, OH & PA
Michael Yates	Director of Sales - Western Region	818-362-2590		818-645-4578	myates@qrp-inc.com	Los Angeles, CA	WA, OR, ID, NV, UT, CO, AZ, NM & CA
Edward "Skip" Thorp	Director of Sales - Southland Region			314-681-5796	sthorp@qrp-inc.com	St. Louis, MO	KS, OK, TX, LA, AR & MO
John McLaughlin	Director of Sales - Northeast Reg	613-332-7103			jmclaughlin@pemnet.com	Danboro, PA	NY, NJ, DE, RI, MA, CT, VT, NH & ME
Larry Hoirch	Exclusive Manufacturer's Representative	514-696-0584	514-624-8409	514-943-1940	larryhoirch@videotron.ca	Montreal, Quebec	Canada (Quebec, Ontario & the Maritimes)
Chris McNeil	Inside Sales - West & Mid-West Regions	910-371-0700	910-371-9055	N/A	cmcneil@qrp-inc.com	Leland, NC	WA, OR, CO, AZ, NM, CA, ID, NV, UT, CA, PA, WV, KY, TN, IL, IA, MN, WI, IN, OH, MI, MT, WY, AK & HI
Brett Howarth	Inside Sales - Southland & Eastern Regions	910-371-0700	910-371-9055	N/A	bhowarth@qrp-inc.com	Leland, NC	TX, OK, KS, MO, AR, LA, PA, NY, NJ, VT, NH, ME, MA, RI, CT, DE, VA, MD, VA, NC, SC, GA, AL, MS, FL, ND, SD & NB



QRP, INC.
a PEM® Company

2307 Mercantile Drive NE • Leland, NC 28451
Tel: 910-371-0700 • Fax: 910-371-9055 • www.qrp-inc.com